

Instructions

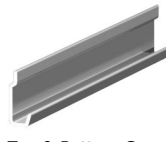
Contents



SlatWall EMX™ Strip



Guitar Hanger PRO™



Top & Bottom Caps



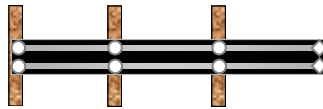
End Caps

Guitars are precious things! Please be sure to follow the installation instructions below so your guitars hang safely and securely for years.

1. Your Guitar Hangers come with a metal security bar and metal thumb screws. We've also included rubber security straps and rubber caps incase if you'd like to swap them out
2. If wall studs are concealed under drywall, you must first locate and mark stud locations. We recommend putting a mounting point every 16" on-center. SlatWall EMX™ can be installed over wood or steel studs.
- ★ **IMPORTANT! Position screws at both ends of the SlatWall EMX™ Strip . If there is no stud at these locations, use appropriate wall anchors. Failure to do so may cause the product to fail.**
3. Attach the Bottom Cap to the wall with screws. Bottom Cap must be straight and level. Do not space screws greater than 16" apart and use #10 x 2-1/2" L pan head screw. Screws should be centered in the small groove on the Bottom Cap. Pre-drill if necessary.
4. Place the SlatWall EMX™ piece onto the Bottom Cap making sure it is seated as shown in Figure A2, and attach with screws.
5. At top of the SlatWall EMX™, attach the Top Cap. A small amount of adhesive may be used on the top flange to secure the Top Cap in place.
6. Attach the End Caps on the left and right sides of the SlatWall EMX.
7. Slot the Hangers into the SlatWall EMX™, and hang your guitars!

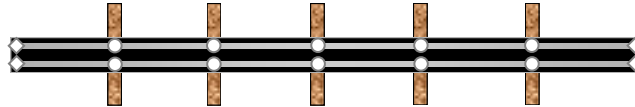
SlatWall Strip Length: 48"

- 3 wall studs utilized
- 8 mounting points required
 - 6 screws
 - ◇ 2 hollow wall anchors



SlatWall Strip Length: 96"

- 5 wall studs utilized
- 14 mounting points required
 - 10 screws
 - ◇ 4 hollow wall anchors



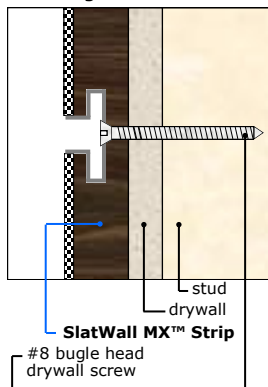
Are the cushions safe for guitars with nitro-cellulose finishes?

Unfortunately, no guitar hangers have completely nitro cellulose safe cushions, ours included.

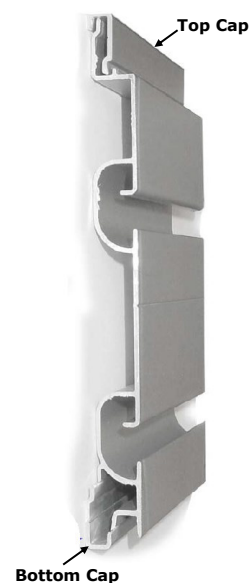
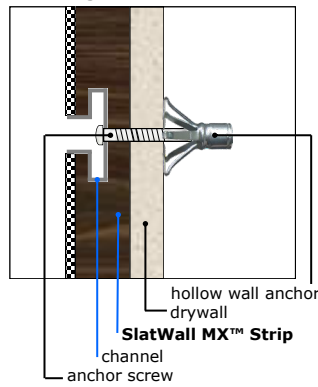
Damage can occur in two ways: the material used for the cushion 'out-gasses' causing the lacquer to stain, or the cushion prohibits air and moisture movement from the wood of the guitar through the finish causing it to stain.

There are accessories that address either of these problems, but not both. Leather covers can be purchased (Ingles #SA-10HC) that allow the wood/finish to breathe, but they do not completely stop the cushion gases from passing through to the finish. There are 'gas-free' cushion materials, but these are relatively expensive and, like the leather covers, address just half the potential problem. Somewhere in between is likely a solution, but so far none of us manufacturers have found one that allows us to have a "finish safe" guarantee. For our guitar hangers we use a material that we consider to be comparatively low in its emissions. We can suggest that cloth or leather 'pads' be placed on the hanger arms.

Fastening into wall stud



Fastening into hollow wall

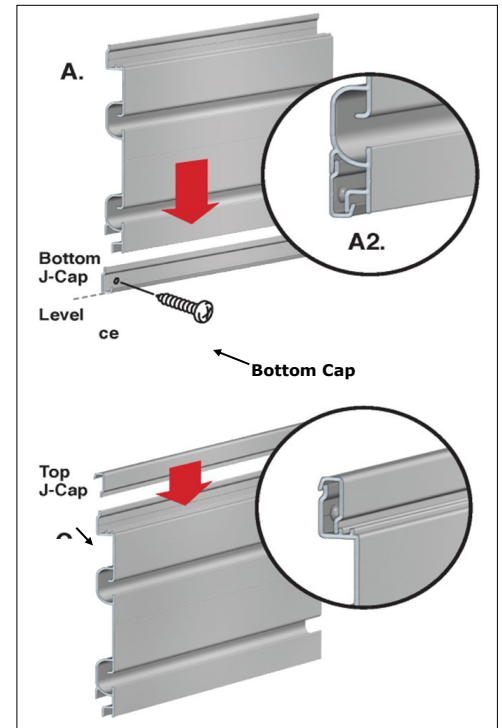


CAUTION!

Keep guitars at least 3 inches away from either ends of SlatWall MX™ Strip. Hanging heavy loads close to the ends can cause the product to break. Also keep guitars at least 6 inches apart.



Guitar Hanger EMX™



Any questions or problems, please contact us:

diamondLife
234 Lott Road
Pittsburgh, PA 15235 USA
Ph. 1.888.98.DGEAR (983.4327)
Email. help@diamondlifegear.com
Store. diamondlifegear.com

Helpful Videos

Point camera at QR code



Features



Installation



What's in the Box?

Doing a common thing uncommonly well, brings success.

diamondLife