

Instructions

Contents



SlatWall MX™ Strip



Guitar Hanger



Guitar Hanger MX™

Installation Instructions

Guitars are precious things! Please be sure to follow the installation instructions below so your guitars hang safely and securely for years.

1. Fasten onto wall using slat wall channels for mounting
2. Pre-drill 5/32"Ø holes into SlatWall MX™ Strip channels thru the aluminum channel inserts to locate panel onto structural wall components (ie wall studs) wherever possible. The units are not pre-drilled so you have complete freedom to position the unit anywhere on the wall regardless of stud locations. Pre-drill the holes appx every 12"-16". Use as many wall studs as possible

★ **IMPORTANT! Screws must be installed through the aluminum channel reinforcements to ensure highest load capacity strength. Failure to do so may cause the product to fail.**

★ **IMPORTANT! Position screws at both ends of the SlatWall MX™ Strip . If there is no stud at these locations, use appropriate wall anchors. Failure to do so may cause the product to fail.**

3. Depending on the size of your screw heads, countersinking the pre-drilled holes may be necessary so the screw heads protruding into the channel do not inhibit movement of hooks.
4. Use a level to ensure level horizontal mounting
5. Using proper size fastener, screw the SlatWall MX™ Strip onto the wall. Do not over tighten screws.

Helpful Hints:

- Due to the manufacturing process, a slight bow in the SlatWall MX™ Strip is normal. This bow is naturally removed by the installation process.
- if you want to affix the hanger onto the SlatWall MX™ Strip, use a thick double sided foam tape on the backside of the hanger to attach it
- If your instrument's head is narrow, squeeze the hanger's "fork" end narrower using a vise or similar



48" strip shown



96" strip shown

Any questions or problems, please contact us:

Gupta Permold Corporation
Consumer Goods Division
diamondLife™ Brand
234 Lott Road
Pittsburgh, PA 15235
USA
Ph. 412.793.3511 x103
Fx. 412.793.1055
Email. help@diamondlifegear.com
Store. diamondlifegear.com



Find hundreds of more great work space enhancement products at www.diamondlifegear.com

Doing a common thing uncommonly well, brings success.

Welcome to the diamondLife.™



Helpful Hint!

Remove protective plastic film after installation

Accessories



Heg Hooks



Baskets



Bins

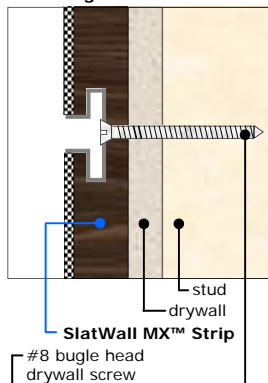


Organizers

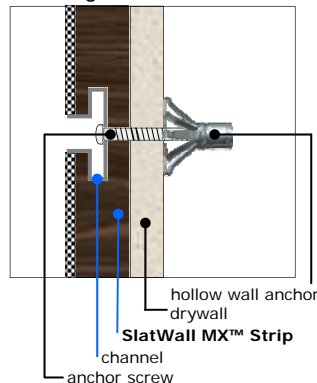


Mounting Fasteners

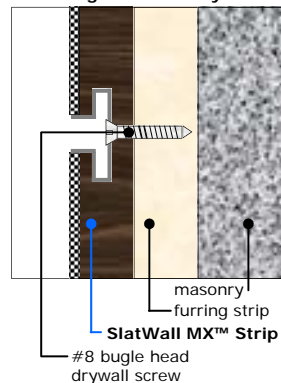
Fastening into wall stud



Fastening into hollow wall



Fastening into masonry wall



CAUTION!

Keep guitars at least 3 inches away from either ends of SlatWall MX™ Strip. Hanging heavy loads close to the ends can cause the product to break. Also keep guitars at least 6 inches apart.