



# Instructions

## Box Contents

Image	Description	Qty	Image	Description	Qty
	Shelf	4		Caster Screw 1/4-20 x 1-1/8" (optional)	12
	Upright	4		Caster Nut 1/4-20 (optional)	12
	Swivel Caster (optional)	2		Shelf Screw 1/4-20 x 5/16"	64
	Swivel Caster w/ Brake (optional)	2		Shelf Nut 1/4-20	64



Tools Needed
Phillips Screwdriver
Slotted Screwdriver
3/8" Socket Wrench
1/2" Socket Wrench


**DiamondRack™**  
P/N: HSXX

Any questions or problems, please contact us:

Gupta Permold Corporation  
Consumer Goods Division  
diamondLife™ Brand  
234 Lott Road  
Pittsburgh, PA 15235  
USA  
Ph. 412.793.3511 x103  
Fx. 412.793.1055  
Email. help@diamonidlifegear.com  
Store. diamonidlifegear.com




## Assembly Instructions

**1**  (this step is optional depending on if your unit has casters)

All 4 Uprights have a top and bottom—identify the bottom end of Uprights by finding the end with an additional 3 holes (the Casters attach to this end)

**2**  (this step is optional depending on if your unit has casters)

Attach 4 Casters to 4 Uprights. Use 3 pcs Caster Screws and 3 pcs Caster Nuts to attach each Caster

**3**  Choose any 2 Uprights and lay them flat


**4**  Attach 2 Shelves to Uprights (see Note 1)

**5**  Attach remaining 2 Shelves (see Note 1)

**6** Attach remaining 2 Uprights (See Note 1)

**7** Stand Shelving Unit up.

**IMPORTANT!** Starting with bottom shelf, apply downward pressure to the shelf so that shelf aligns itself with the uprights. Repeat this step for each shelf moving upward. This important step assures that the unit will stand straight when fully assembled

**8**  The Shelving Unit is now near completion. Put on all other Shelf Screws and Shelf Nuts (there will be 4 at each corner). Keep Shelf Nuts loose and do not tighten (will be tightened last step).

Tighten all Shelf Screws and Shelf Nuts. Do not over tighten. Assembly is complete.

**Note 1:**

**Applies to Steps 4 thru 6**

- During assembly, use only 2 Shelf Screws and 2 Shelf Nuts at each corner
- Final 2 Shelf Screws and 2 Shelf Nuts at each corner will be put on last step.
- For best appearance of Shelving Unit, put Shelf Nut on outside of Shelving Unit.
- Keep all Shelf Nuts loose and do not tighten (will be tightened last step).



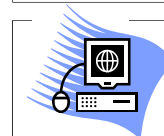
**CAUTION!**

Use care when handling metal edges as they can be sharp to the touch. It is recommended to wear work gloves during handling. Heavier items such as Shelves can shift unexpectedly during handling and cause cuts.



**Helpful Hint!**

Remove protective plastic film from Uprights and Shelves before assembly



Find more great Garage Gear at [www.diamonidlifegear.com](http://www.diamonidlifegear.com)

