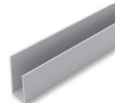


# Instructions

## Contents

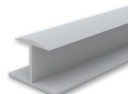


SlatWall PX™



End Cap

## Trim (optional)



Joiner



Inside/Outside Corner

## Installation Instructions

1. Start at the bottom. If studs are concealed under a substrate, first locate and mark stud locations. We recommend attachment every 16" horizontally. SlatWall PX™ can be installed over wood or steel studs.
2. Laser or snap a level reference line at the bottom of your entire slatwall area. Double check to make sure the total number of slatwall pieces will fit your desired area including J-Caps.
3. Use #10 x 2-1/2" long pan head screw. Screws should be centered in grooves of the SlatWall PX™. Pre-drill if necessary.
4. Horizontal screw spacing: Do not space screws greater than 16" apart horizontally..
5. Vertical screw spacing: Put screws in every groove for best results, or alternatively in every other groove for lighter loads.
6. Once seated correctly, attach each piece with screws in the grooves. Repeat the procedure with additional slat-wall pieces, making sure each piece is seated and secured with screws. If using End Caps, slide them onto the left and right edges as you work your way up. Continue to the top of your slatwall area until all pieces are installed. Always check level and fit of each piece.

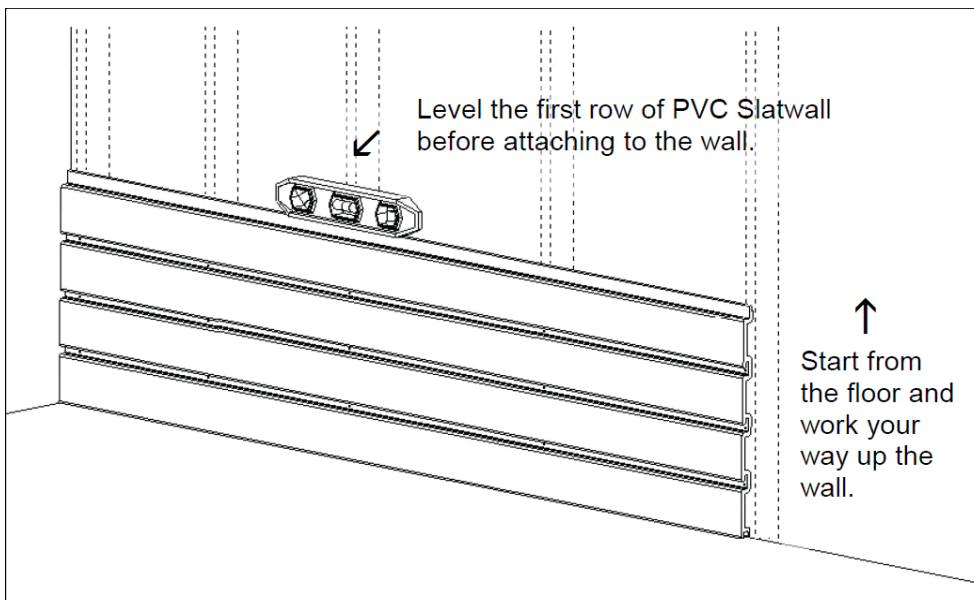
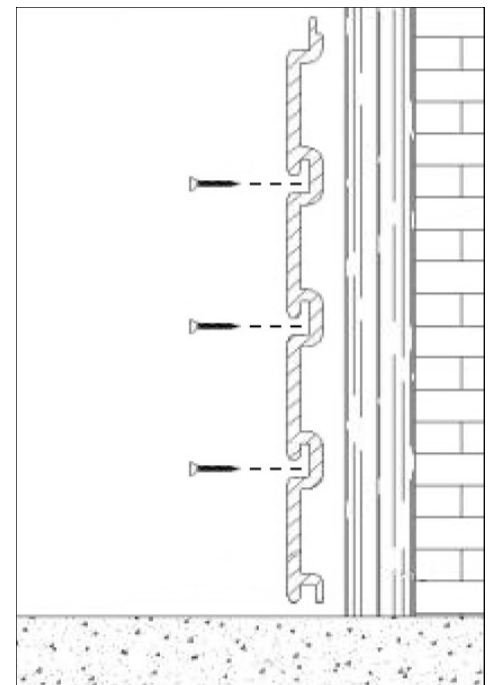
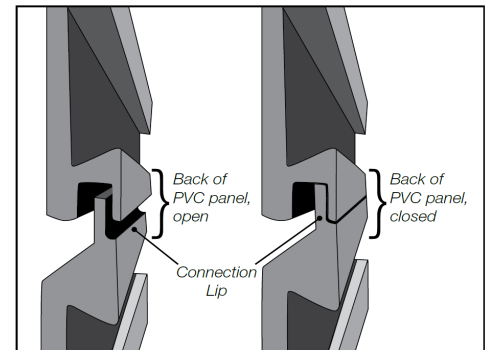


Any questions or problems, please contact us:

diamondLife  
234 Lott Road  
Pittsburgh, PA 15235  
USA


Ph. 1.888.98.DGEAR (983.4327)  
Email. help@diamondlifegear.com  
Store. diamondlifegear.com

Illustration showing back panel connection lip ↴



Doing a common thing uncommonly well, brings success.

Welcome to the diamondLife.™

 diamondLife